



## Bridge Component and SMF Bridge Installation Instructions for Elxis CMS

Document Ver. 1.01 (19 Nov 2006)

### SMF 1.1 RC3 Forum Installation

Download from <http://www.simplemachines.org/download/> the SMF11.RC3 version of SMF (smf\_1-1-rc3\_install.zip).

Create a new directory named smf11rc3 under your Elxis root directory.

Unzip the files locally and transfer them to directory smf11rc3.

Create a new MySQL database to be used by SMF (smfelxisbook).

Use your browser to start installing SMF.

If your Elxis web site is at <http://www.elxissite.com>, then if you had followed our instructions, you have to type <http://www.elxissite.com/smf11rc3/install.php>.

You will see the following screen (Image 1) and fill the appropriate data.

**SMF Installer** simple machines forum

---

**Basic Settings**

Just a few things for you to setup ;).

**Forum name:**   
This is the name of your forum, ie. "The Testing Forum".

**Forum URL:**   
This is the URL to your forum **without the trailing '/'**.  
 In most cases, you can leave the default value in this box alone - it is usually right.

**Gzip Output:** ☒ Compress output to save bandwidth.  
This function does not work properly on all servers, but can save you a lot of bandwidth.  
 Click [here](#) to test it. (it should just say "PASS".)

**Database Sessions:** ☒ Use the database for sessions instead of using files.  
This feature is almost always for the best, as it makes sessions more dependable.

**UTF-8 Character Set:** ☒ Use UTF-8 as default character set  
This feature lets both the database and the forum use an international character set, UTF-8. This can be useful when working with multiple languages that use different character sets.

**Allow Stat Collection:** ☐ Allow Simple Machines to Collect Basic Stats Monthly  
If enabled, this will allow Simple Machines to visit your site once a month to collect basic statistics. This will help us make decisions as to which configurations to optimize the software for. For more information please visit our [info page](#).

---

**MySQL Server Settings**

These are the settings to use for your MySQL server. If you don't know the values, you should ask your host what they are.

**MySQL server name:**   
This is nearly always localhost - so if you don't know, try localhost.

**MySQL username:**   
Fill in the username you need to connect to your MySQL database here.  
 If you don't know what it is, try the username of your ftp account, most of the time they are the same.

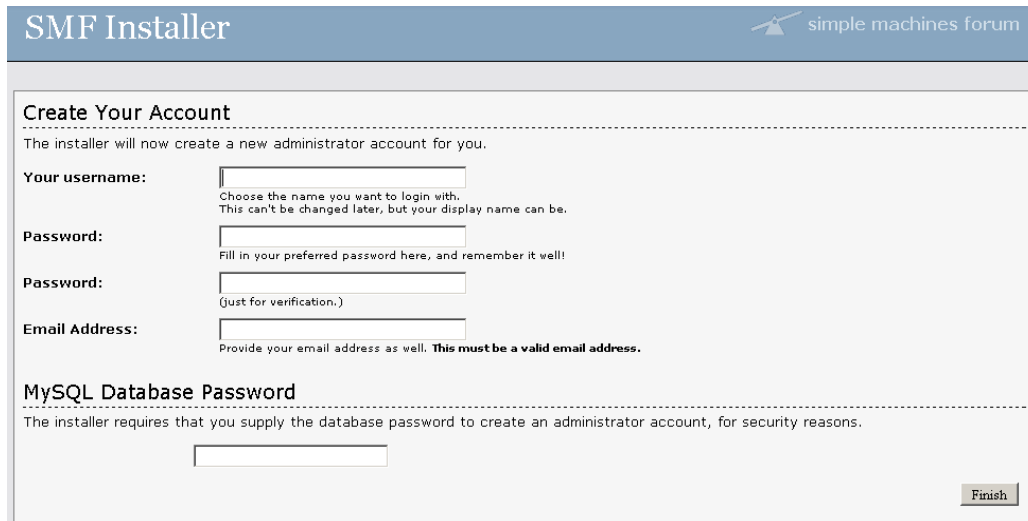
**MySQL password:**   
Here, put the password you need to connect to your MySQL database.  
 If you don't know this, you should try the password to your ftp account.

**MySQL database name:**   
Fill in the name of the database you want to use for SMF to store its data in.  
 If this database does not exist, this installer will try to create it.

**MySQL table prefix:**   
The prefix for every table in the database. **Do not install two forums with the same prefix!**  
 This value allows for multiple installations in one database.

Image 1

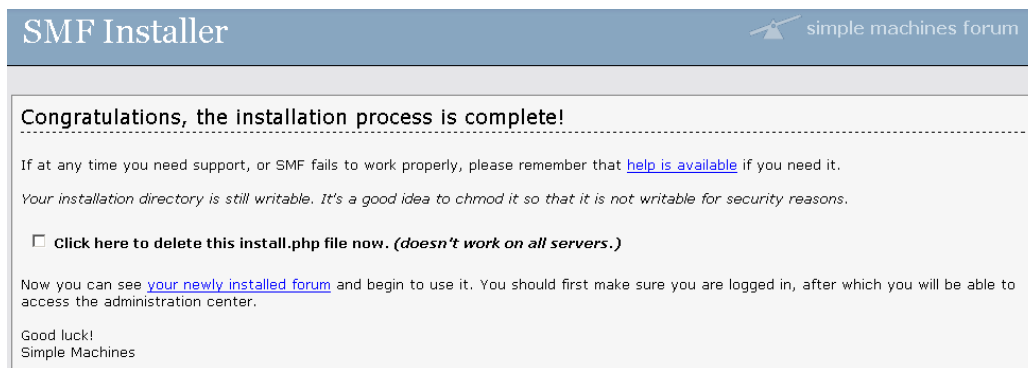
Press the Proceed button to move to the next screen (Image 2) and fill the data for the administrator account.



The image shows the 'SMF Installer' interface for 'simple machines forum'. The main heading is 'Create Your Account'. Below it, a message states: 'The installer will now create a new administrator account for you.' There are four input fields: 'Your username:', 'Password:', 'Password:', and 'Email Address:'. Each field has a small text box below it with instructions. The 'Your username:' field has a note: 'Choose the name you want to login with. This can't be changed later, but your display name can be.' The 'Password:' fields have a note: 'Fill in your preferred password here, and remember it well!' and '(just for verification.)'. The 'Email Address:' field has a note: 'Provide your email address as well. This must be a valid email address.' Below these fields is a section titled 'MySQL Database Password' with a message: 'The installer requires that you supply the database password to create an administrator account, for security reasons.' and an empty input field. A 'Finish' button is located at the bottom right.

Image 2

Press the Finish button to complete the installation and view the last screen (Image 3). **Remember to delete the install.php file.**



The image shows the 'SMF Installer' interface for 'simple machines forum'. The main heading is 'Congratulations, the installation process is complete!'. Below it, a message states: 'If at any time you need support, or SMF fails to work properly, please remember that [help is available](#) if you need it.' Another message states: 'Your installation directory is still writable. It's a good idea to chmod it so that it is not writable for security reasons.' There is a checkbox labeled 'Click here to delete this install.php file now. (doesn't work on all servers.)'. Below this, a message states: 'Now you can see [your newly installed forum](#) and begin to use it. You should first make sure you are logged in, after which you will be able to access the administration center.' At the bottom, it says 'Good luck! Simple Machines'.

Image 3

Now you can see your newly installed forum from <http://www.elxissite.com/smf11rc3> and begin to use it. You should first make sure you are logged in, after which you will be able to access the administration center.

## Bridge Component Installation

Now it is time to go to your Elxis administration and install the Bridge component.

Go to Components -> Install/Uninstall and browse to select the com\_bridge\_1.0.zip file you downloaded from Elxis Directory. Press "Upload File and Install Button" to start the installation.

After the successful installation you will see the screen of image 4. Please read carefully the license and press Continue to finish installation.

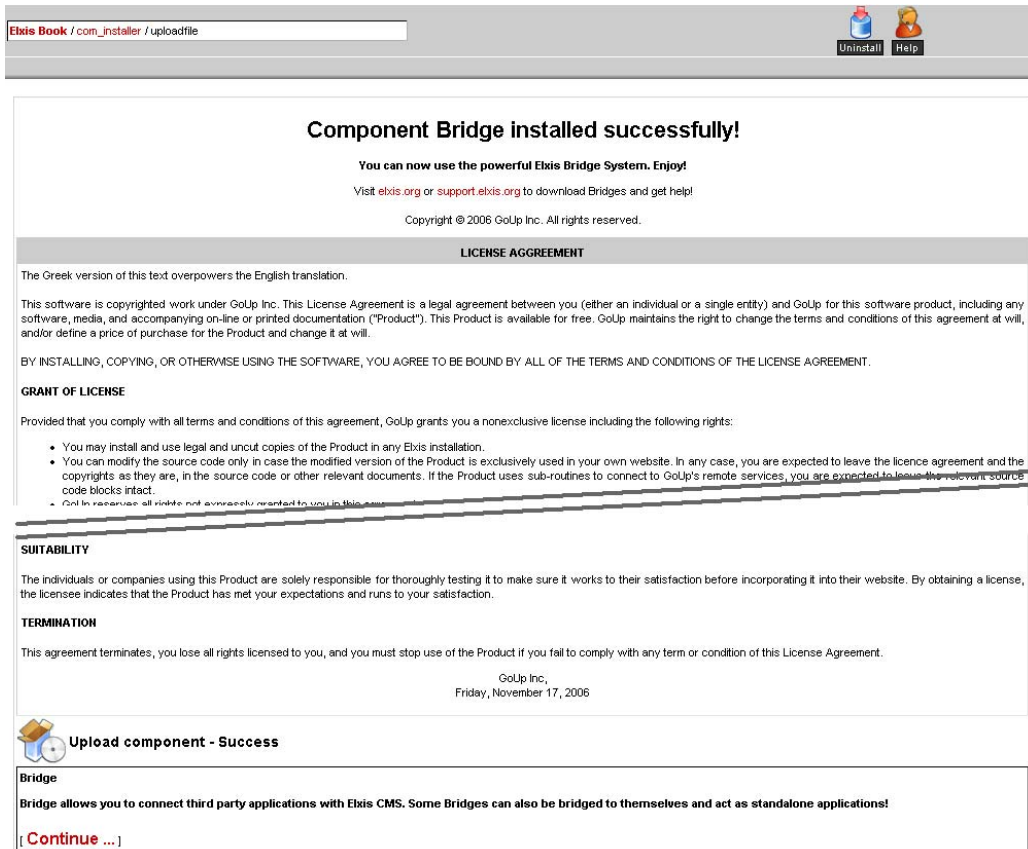


Image 4

Now, under Components menu, you will see a new entry for Bridge component (Image 5).

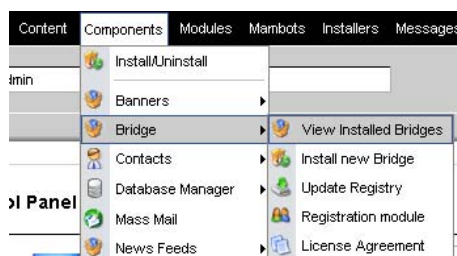


Image 5

## Install Bridge for SMF

Go to Elxis Directory and download from Software/Bridges the Bridge Pack for SMF1.1RC3 Forum file.

Unzip locally and use **bri\_smf11rc3\_1.0.zip** file that is the actual bridge.

To install the bridge for SMF 1.1RC3, go to Components -> Bridge -> Install new Bridge and select the above mentioned file to install.

## Configure SMF Bridge

After successful installation, you will see the following screen (Image 6).

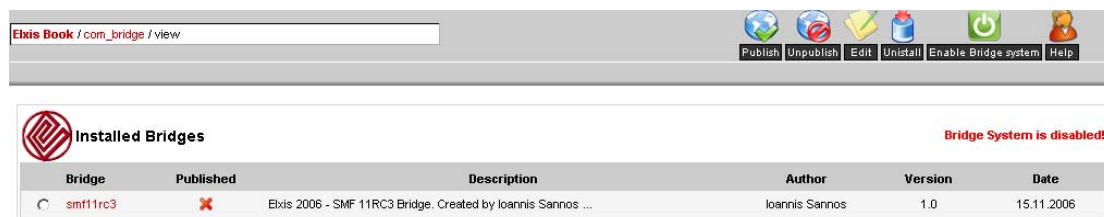


Image 6

Click the **Enable Bridge system** icon on toolbar to enable the Bridge system (Image 7).

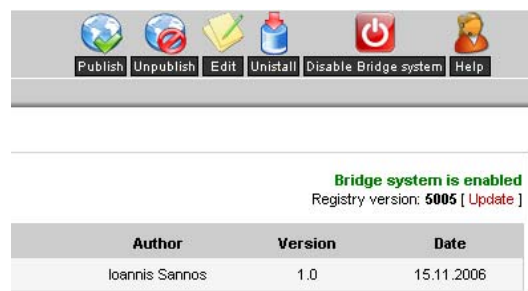


Image 7

Check the red **X** next to bridge name to **publish** it.

Click on **smf11rc3** bridge name to start configuring the module (Image 8).

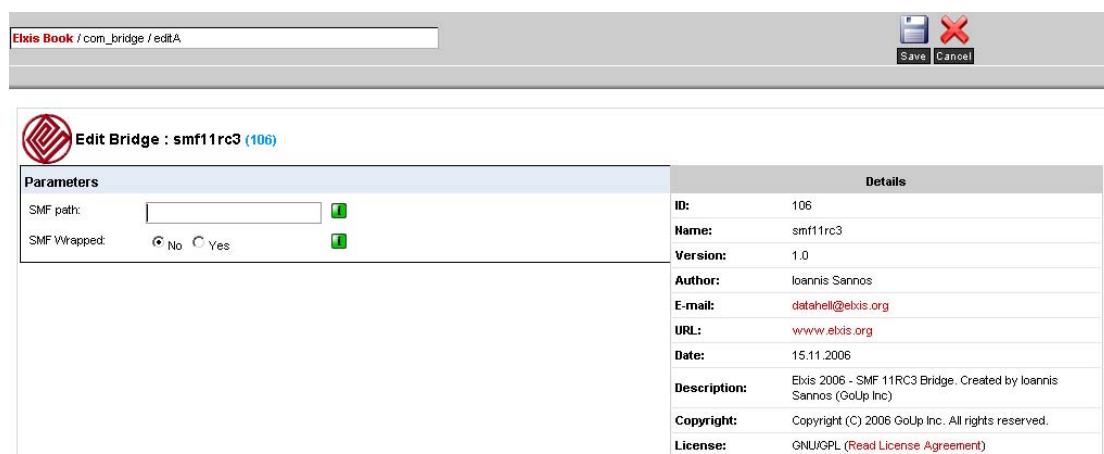


Image 8

Type on SMF path field the absolute path to SMF. In my local system is for example, /www/httpdocs/elxisbook/smf11rc3

Select if you want to view the SMF in wrapped or non-wrapped mode. You can change this later. Click the Save icon to save your changes.

## ***Patching SMF***

Prior start using SMF with Elxis bridge, you have to take two actions.

Copy the elxisbri.php file to SMF root directory

Open the index.php file of SMF and go to line 35 where you will find the

```
$forum_version = 'SMF 1.1 RC3';
```

Add before that the following line of code:

```
require(dirname(__FILE__) . '/elxisbri.php');
```

Save your changes.

## ***Install Bridge Login Version***

Download and install, from Elxis Directory (Software/Elxis) the Bridge Login Module.

Unpublish the default login module of Elxis and publish this one. Remember to set its Access Level to Public Frontend. Otherwise the module will not show up although it is published.

## ***Create a Link to your Forum***

To show the SMF forum from your Elxis Site, you have to create a new menu item of type Bridge.

From the Menu menu, select the menu in which you want to add the new menu item.

Click the New icon.

Select as menu item type Bridge, from the Miscellaneous group.

You will the screen of image 9. Select from the bridge combo box the smf11rc3 bridge.

Add Menu Item :: Bridge	
<b>Details</b> Name: <input type="text" value="SMF Forum"/> Bridge: <input type="text" value="smf11rc3"/> On Click, Open in: <input type="text" value="Parent Window With Browser Navigation"/> Parent Item: <input type="text" value="Top"/> Ordering: New items default to the last place. Ordering can be changed after this item is saved. Language: <input type="text" value="All Languages"/> Access Level: <input type="text" value="Public Frontend"/> Published: <input checked="" type="radio"/> No <input checked="" type="radio"/> Yes	<b>Parameters</b> Menu Image: <input type="text" value="- Do not use an image -"/> Use Only the Menu Image: <input checked="" type="radio"/> No <input type="radio"/> Yes

Image 9

Press the Save icon to save your changes.

## Check Installation

Go to your Elxis frontend and click the new menu item. If everything went OK, you will see the SMF forum from inside Elxis. According to the value of the SMF Wrapped parameter of the SMF bridge, you will see the forum in Wrapped (Image 10), or non-wrapped mode (Image 11). Please note the URL on your browser. SMF is running as part of Elxis.

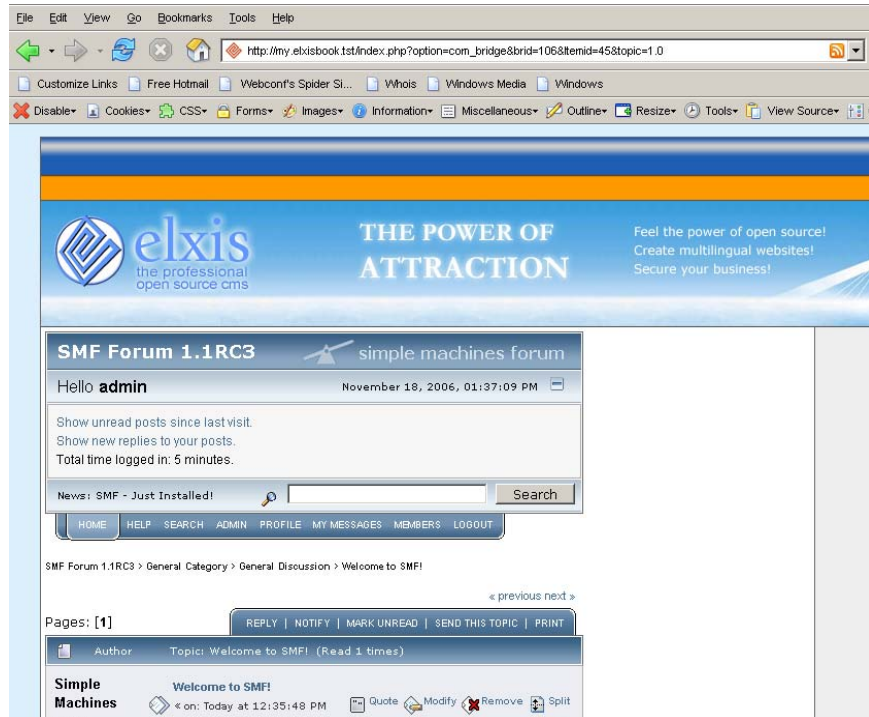


Image 10. Wrapped mode

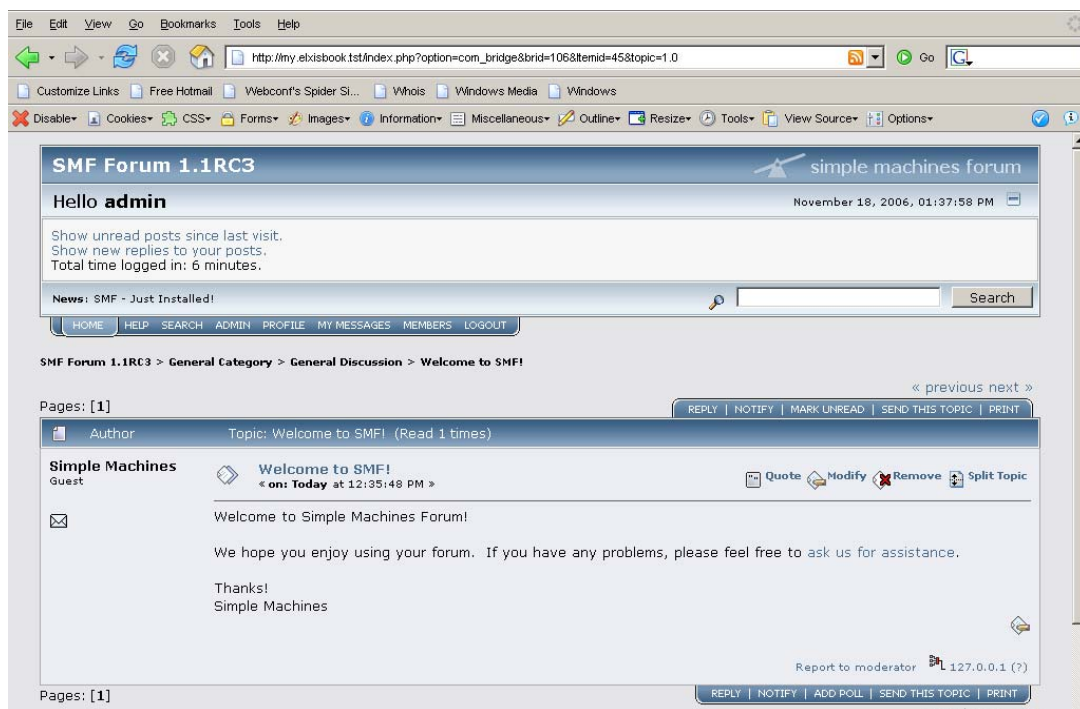


Image 11. Non-wrapped mode

## ***Enable the Bridge Login Module***

Go to Component -> Bridge -> Registration module, select as registration module the elxis and save your changes.

Now every time a user creates an account to your Elxis site, automatically the same account is created for SMF forum.

The next time the user connects to your Elxis site, it is automatically logged in and to the SMF forum!

## ***Final Note***

This implementation of the SMF Bridge has to be considered as beta version.  
Elxis Bridge component is released as Freeware. Please read the License Agreement.

Author of Component: GoUp Inc. (Ioannis Sannos)

Author of this documentation: GoUp Inc. (Ilias Antonopoulos)

## ***License Agreement for Bridge Component***

The Greek version of this text overpowers the English translation.

This software is copyrighted work under GoUp Inc. This License Agreement is a legal agreement between you (either an individual or a single entity) and GoUp for this software product, including any software, media, and accompanying on-line or printed documentation ("Product"). This Product is available for free. GoUp maintains the right to change the terms and conditions of this agreement at will, and/or define a price of purchase for the Product and change it at will.

BY INSTALLING, COPYING, OR OTHERWISE USING THE SOFTWARE, YOU AGREE TO BE BOUND BY ALL OF THE TERMS AND CONDITIONS OF THE LICENSE AGREEMENT.

### **GRANT OF LICENSE**

Provided that you comply with all terms and conditions of this agreement, GoUp grants you a nonexclusive license including the following rights:

- You may install and use legal and uncut copies of the Product in any Elxis installation.
- You can modify the source code only in case the modified version of the Product is exclusively used in your own website. In any case, you are expected to leave the licence agreement and the copyrights as they are, in the source code or other relevant documents. If the Product uses sub-routines to connect to GoUp's remote services, you are expected to leave the relevant source code blocks intact.
- GoUp reserves all rights not expressly granted to you in this agreement.

### **RESTRICTIONS**

Unless you have been granted prior, written consent from GoUp, you may not:

- Reproduce, distribute, or transfer the product, or portions thereof, to any third party.
- Sell, rent, lease, assign, or sublet the software, portions thereof, or add-on modules.
- Modify the software or portions thereof, in order to distribute it as a new or modified version.
- The use of the whole Product or portions thereof, in another project, without the consent of GoUp.
- Grant rights to any other person.

### **DISCLAIMER OF WARRANTY**

THE SOFTWARE IS PROVIDED "AS IS", WITHOUT WARRANTY OF ANY KIND, EXPRESS OR IMPLIED, INCLUDING, BUT NOT LIMITED TO, WARRANTIES OF QUALITY, PERFORMANCE,

NON-INFRINGEMENT, MERCHANTABILITY, OR FITNESS FOR A PARTICULAR PURPOSE. FURTHER, MOSETS.COM DOES NOT WARRANT THAT THE SOFTWARE OR ANY RELATED SERVICE WILL ALWAYS BE AVAILABLE.

#### **TECHNICAL SUPPORT**

Technical support is available for customers that have a support contract with GoUp through the Elxis CMS support center at <http://support.elxis.org>. GoUp has the right to decline or ignore support requests or other information concerning the software to individuals or companies that do not have a contract with GoUp, as the software is provided without any guarantee and "as is".

#### **LIMITATION OF LIABILITY**

Under no circumstances and under no legal theory, tort, contract, or otherwise, shall GoUp is liable to you or any other person for any indirect, special, incidental, or consequential damages of any character including, without limitation, damages for loss of goodwill, work stoppage, computer failure or malfunction, or any and all other commercial damages or losses.

#### **SUITABILITY**

The individuals or companies using this Product are solely responsible for thoroughly testing it to make sure it works to their satisfaction before incorporating it into their website. By obtaining a license, the licensee indicates that the Product has met your expectations and runs to your satisfaction.

#### **TERMINATION**

This agreement terminates, you lose all rights licensed to you, and you must stop use of the Product if you fail to comply with any term or condition of this License Agreement.

GoUp Inc.,  
Friday, November 17, 2006